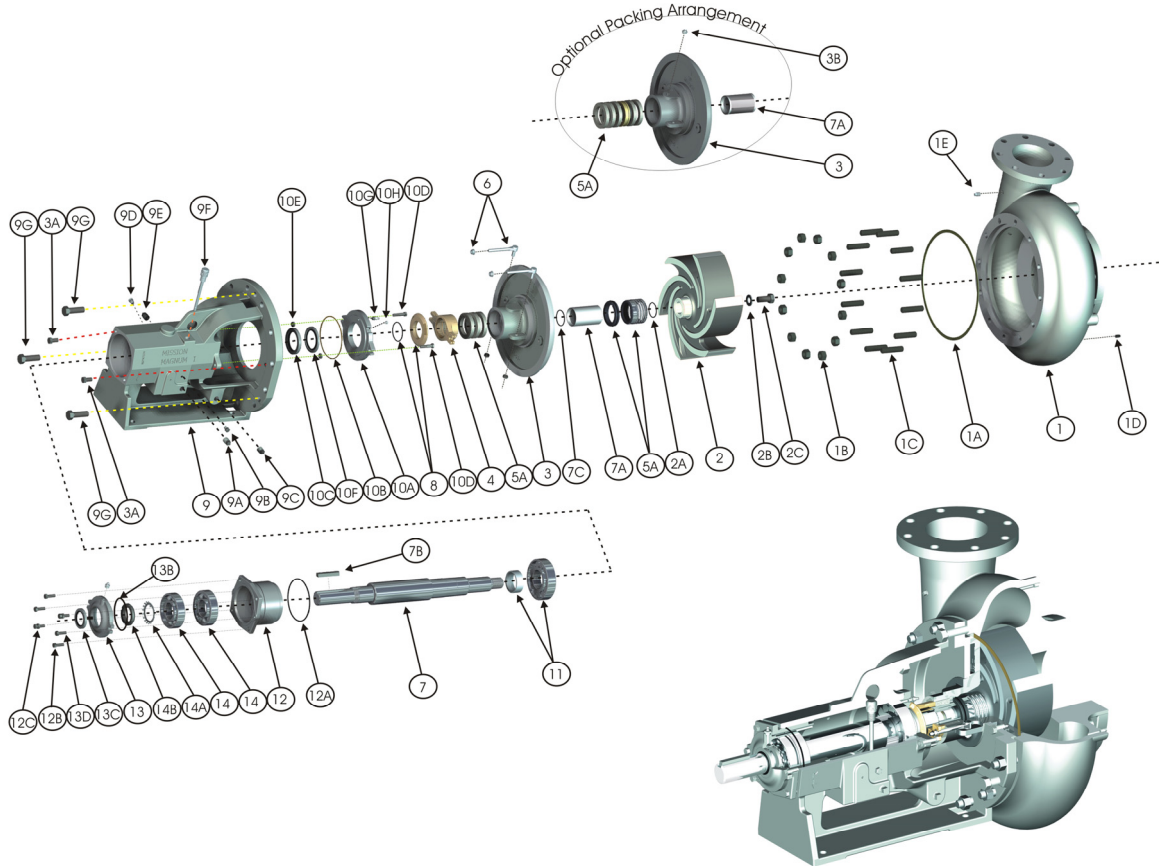


# Magnum I Centrifugal Pump



Pump Size	Material	ITEM 1 Casing Assembly	ITEM 2 Impeller Assembly*	ITEM 3 Stuffing Box for Packed Pump	ITEM 3 Stuffing Box for Mechanical Seal	ITEM 3 Stuffing Box for Olympia Seal
3x2x13	Hard Iron	641101753	19204-XX-30	643365042	641116157	20614DS
3x2x13	Magnachrome	643328016	19204-XX-AZ	643365083	643367501	N/A
3x2x13	316SS	662002017	19204-XX-04	643368863	640203183	N/A
3x2x13	Alum Bronze	641101704	19204-XX-13	643362403	641223300	N/A
4x3x13	Hard Iron	641101902	19206-XX-30	643365042	641116157	20614DS
4x3x13	Magnachrome	643331713	19206-XX-AZ	643365083	643367501	N/A
4x3x13	316SS	662004001	19206-XX-04	643368863	640203183	N/A
4x3x13	Alum Bronze	641101852	19206-XX-13	643362403	641223300	N/A
5x4x14	Hard Iron	641102058	19224-XX-30	643365042	641116157	20614DS
6x5x11	Hard Iron	641101456	19121-XX-30	643365042	641116157	20614DS
6x5x11	Magnachrome	662002024	19121-XX-AZ	643365083	643367501	N/A
6x5x14	Hard Iron	641101605	19121-XX-30	643365042	641116157	20614DS
6x5x14	Magnachrome	643322019	19121-XX-AZ	643365083	643367501	N/A
6x5x14	316SS	662002021	19121-XX-04	643368863	640203183	N/A
8x6x11	Hard Iron	641102157	19121-XX-30	643365042	641116157	20614DS
8x6x14	Hard Iron	641101308	19116-XX-30	643365042	641116157	20614DS
8x6x14	Magnachrome	643312016	19116-XX-AZ	643365083	643367501	N/A
8x6x14	316SS	662002025	19116-XX-04	643368863	640203183	N/A
10x8x14 S.M.	Hard Iron	641102322	21867-XX-30	643365042	641116157	20614DS
10x8x14 S.M.	Magnachrome	643360910	21867-XX-AZ	643365083	643367501	N/A

\* Impeller size indicated as XX for simplicity.

# Magnum I Centrifugal Pump

ITEM	QTY	PART NO.	CATALOG NO.	DESCRIPTION
1	1	See Page 1	See Below	Casing (see page 1)
1A	1	648403012	10399-46-1	Gasket, Casing (std) Celluloid
1A	Option	648403013	10399-46-6	Gasket, Casing (opt) Teflon
1A	Option	648403014	10399-46-72	Gasket, Casing (opt) Viton
1B	12	648402014	3932-61	Nut, Casing
1C	12	648401115	3862-76	Stud, Casing
1D	1	86485503		Plug, Casing Drain
1E	1	646400507	8505-04-01	Plug, Flush Line
2	1	See Page 1		Impeller (see page 1)
2A	1	648405082	19110-72	Seal, Impeller
2B	1	7300239		Washer, Impeller
2C	1	7415648		Bolt, Impeller Lock
3	1	See Page 1		Stuffing box (see page 1)
3A	2	648401016	3861-117	Bolt, Stuffing box
3B	1	601499403	19368-01	Grease Fitting
4	1	641103338	20622A	Gland Assy., Packing
5A	1	648414308	22451-1	Seal, Mechanical (tungsten carbide faces)
5A	Option	648414340	22451-2	Seal, Mechanical (ceramic to carbon faces)
5A	Option	25001-1	25001-1	Seal, Hub Mount Mechanical (tungsten faces)
5A	Option	648414357	22451-3	Seal, Mechanical (silicon to tungsten faces)
5A	Option	22451-9A	22451-9A	Seal, Mechanical (silicon carbide faces)
	Option	KCD SEAL	KCD SEAL	Seal, Double Olympia Kit (WC to WC & WC to C)
5A	1	661007005	25014-04M-B	Packing, Shaft - w/latern ring (Graphite)
5A	Option	661007008	25015-04M-BA	Packing, Shaft - w/latern ring (King)
5A	Option	661007011	250147-04M-D	Packing, Shaft - w/latern ring (Teflon)
5A	Option	661007006	25014-04M-C	Packing, Shaft - w/latern ring (Kevlar)
5A	Option	648402600		Packing, Shaft - M.S. Backup (Graphite)
	1	648408607		Ring, Latern
6	2	601102494	B3701A	Bolt Assy, Gland
7	1	646490557	20612-02-33	Shaft
7A	1	641102182	20943-21A	Sleeve, Shaft 416SS (M.S. Pump std)
7A	1	641102181	20613-21G-7A	Sleeve, Shaft Cr2O3 coat 416SS (Pack Pump std)
7A	Option	641103437	20943-04A	Sleeve, Shaft 316SS (opt)
7B	1	601212392	4372-5-21	Key, Shaft
7C	1	648415156	23444-01-72	Seal, Shaft Sleeve
8	1	641116108	22210-1A	Deflector Assembly
9	1	644302499	20618-12-1	Frame, Grease Lubricated
9A	1	601474737	8505-05	Plug, Oil Drain
9B	1	648403608	18471	Guage, Sight Oil
9C	1	601474737	8505-05	Plug, Frame Drain
9D	1	601473689	8267-01	Breather
9E	Option	601174584	8478-3	Oiler Assembly
9F	1	662014131	A 662014131	Dip Stick
9G	3		2538-1H	Bolt, Casing Jack
10A	1	641103361	20626A	Cover, Inboard Bearing
10B	1	648408706	20625	Gasket, I.B. Brg. Cover
10C	1	648408300	20619-01	Oil Seal, I.B. Brg. Cover
10D	2	601407505	3861-1	Bolt, I.B. Brg. Cover
10E	2	601408560	3932-2	Nut, I.B. Brg. Cover
10F	1	648408409	20620-01	Exclusion Seal, I.B. Brg. Cvr.
10G	1	661010033	21641-01	Grease Fitting
10H	1	648411908		Grease Fitting
11	1	661009010A		Bearing, Inboard Roller & Spacer
11	Option	648408102	20615-1	Bearing, Inboard Ball
12	1	644308504	20624-01-01	Housing, O.B. Bearing
12A	1	648402295	7496-253	Seal, O.B. Brg. Housing
12B	4	648401057	3861-138	Bolts, O.B. Brg. Housing
12C	2	658404702	3932-62	Nut, O.B. Brg. Housing Jam
13	1	641103296	20617A	Cover, O.B. Bearing
13A	1	661010020		Grease Zerk, O.B. Brg. Cvr.
13B	1	072200017	7496-26	O-ring, O.B. Bearing Cover
13C	1	648408359	20619-02	Oil Seal, O.B. Brg. Cover
13D	2	648401081	3861-139	Bolt, O.B. Brg. Cover
13E	2	648402030	3936-19-L8	Washer, Outboard Brg. Cvr.
14	2	648408201S	N/A	Bearing, O.B. (2 Brg. set)
14A	1	648402105	6124-4	Lockwasher, O.B. Bearing
14B	1	648402055	6123-4	Locknut, O.B. Bearing

[www.nov.com](http://www.nov.com) / [corporatemarketing@nov.com](mailto:corporatemarketing@nov.com)



10000 Richmond Avenue, Houston, Texas 77042  
Phone: 713 346 7500 • Fax: 713 435 2195