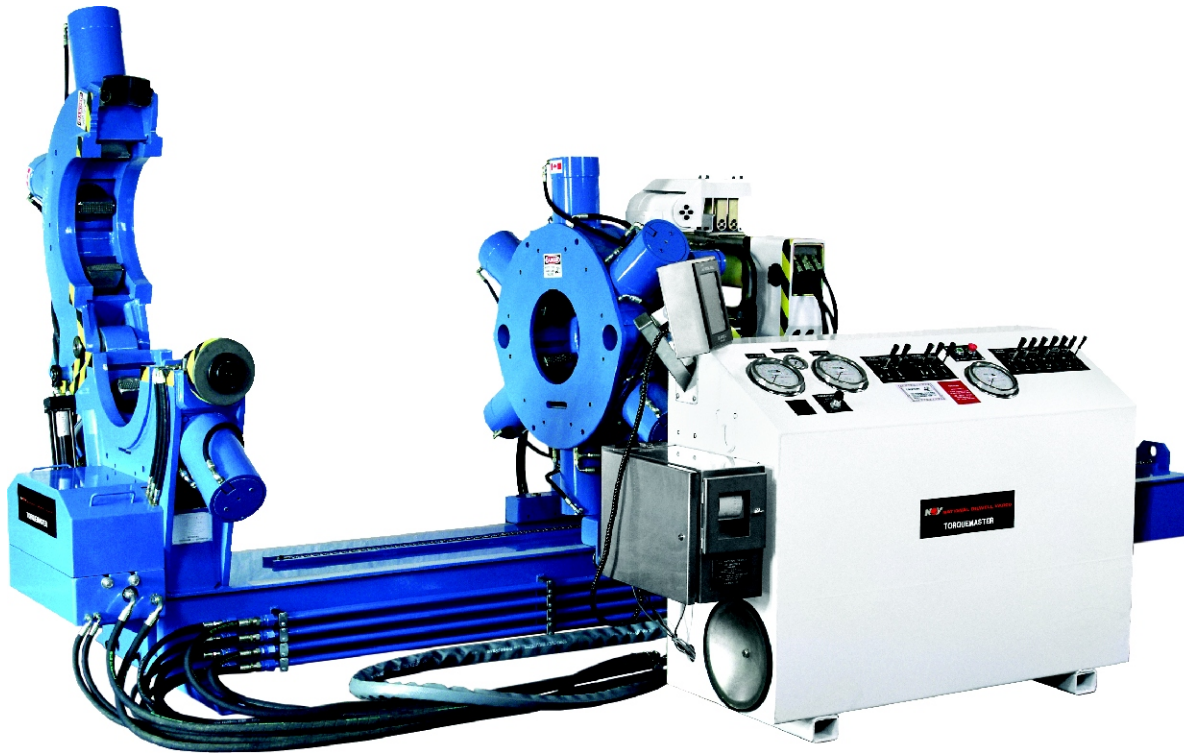


Model 8026 Hinged Headstock Torquemaster

National Oilwell Varco's Model 8086 Hinged Headstock Torquemaster is designed for fast, safe, and dependable operation in either workshop or drill site locations. The unit features a fully opening, hinged headstock. Available options include Push/Pull Cylinder, Spinner, Jar Tester, and Digital Readout and Torque Recorder.



Model 8026 Hinged Headstock Torquemaster

AVAILABLE OPTIONS:

Bed Length

Specify 12', 14', 16' or 18' (inquire if shorter or longer lengths are required).

Headstock Extension and Tailstock Extension Beams

Specify length required.

Push/Pull Cylinder

Specify Yes or No. Specify head or tailstock position and beam length.

Support Jacks

Specify quantity (maximum of 5). Specify location: tailstock, headstock or extension beams.

Spinner

Specify Yes or No and headstock or tailstock mount.

Specify model: 1397 medium torque to 1500 lbf-ft at 14" diameter. 1375 high torque to 2340 lbf-ft at 14" diameter.

Jar Tester

Specify Yes or No (4 jacks if Yes), and hose length.

Log Master – Torque Logger Unit

Specify Log Master I Torque Logger (Model 8089) or Log Master II Controller/Torque Logger (Model 8090).

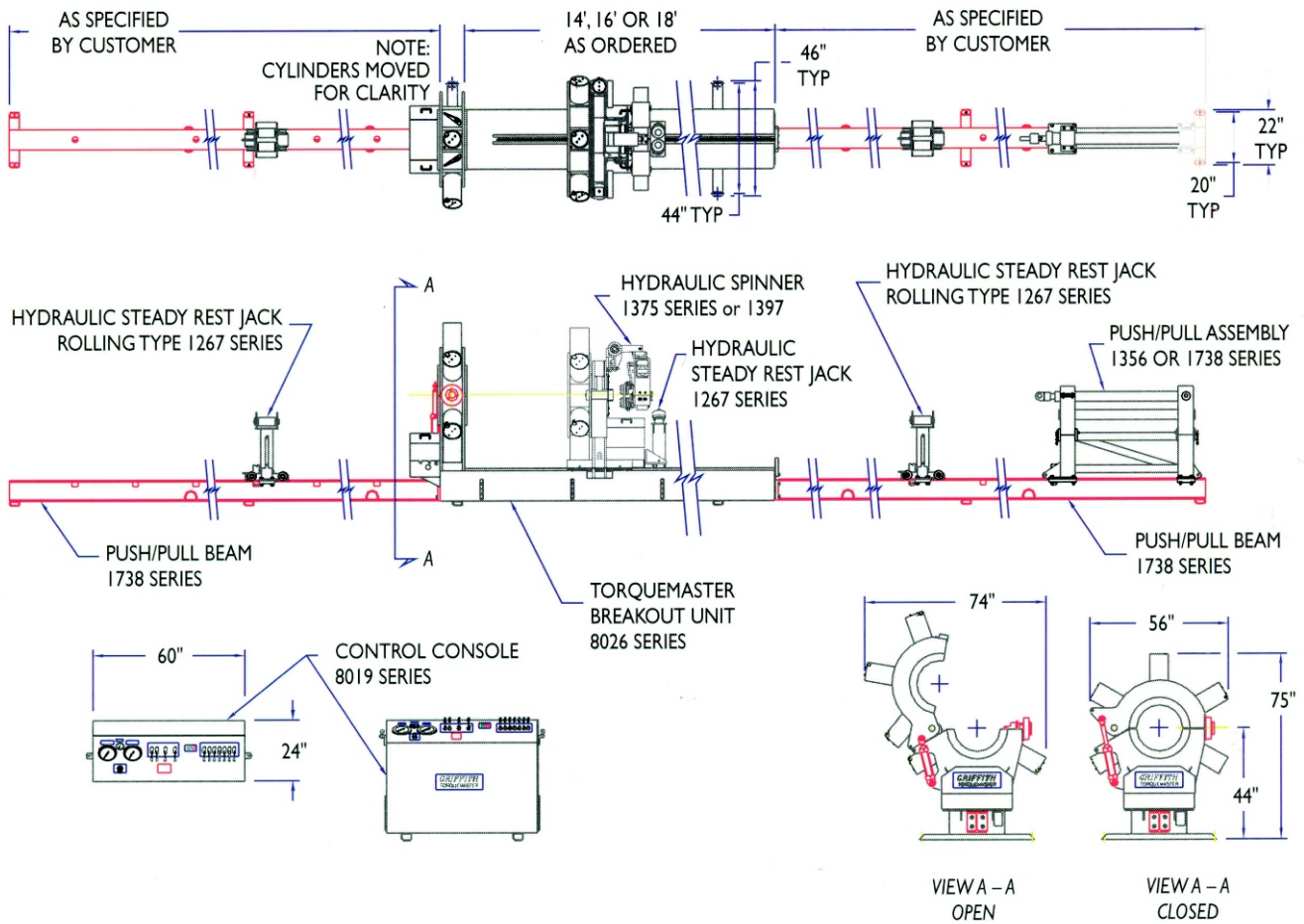
www.nov.com / downhole.tools@nov.com

Corporate Headquarters
10000 Richmond Avenue
Houston, Texas 77042
United States
Phone: 713 346 7500
Fax: 713 346 4493

International Sales
9120 - 34A Avenue
Edmonton, AB T6E 5P4
Canada
Phone: 780 702 5209
Toll Free: 877 645 8665
Fax: 780 463 2348

 **NATIONAL OILWELL VARCO**

Model 8026 Hinged Headstock Torquemaster



Model 8026 Hinged Headstock Torquemaster, Typical Configuration

Technical Specifications

Chucking Capacities	Headstock		Tailstock	
Model 8026	3½" - 18"	(90 mm - 457 mm)	3½" - 14"	(90 mm - 355 mm)

Torque Capacity for all Models

Make Up	6,000 - 150,000 lbf-ft (5400 - 203,000 N.m)
Break Out	190,000 lbf-ft maximum (257,000 N.m)
Bed Length	176" (4.47 m) width @ 14'
Overall Width	56" (1422 mm)
Overall Height	75" (1905 mm)
Weight	12,500 lbs (5,682 kg) approximate with console
Electrical Requirements	20 hp (15 kW) — customer to specify voltage and frequency

www.nov.com / downhole.tools@nov.com

Corporate Headquarters
10000 Richmond Avenue
Houston, Texas 77042
United States
Phone: 713 346 7500
Fax: 713 346 4493

International Sales
9120 - 34A Avenue
Edmonton, AB T6E 5P4
Canada
Phone: 780 702 5209
Toll Free: 877 645 8665
Fax: 780 463 2348

 **NATIONAL OILWELL VARCO**

© 2005 National Oilwell Varco
SRV-8026HT-FLY-001 Rev. 03